



M. The North Shore

Immediately prior to the 1966 Angus Commission, this area had one two-member electoral district (North Vancouver), which included all of the North Shore. (see North Shore, Map 1).

North Shore, Map 1

1. Evolution of the North Shore electoral districts

a. The Angus Commission (1966)

The Angus Commission recommended dividing the two-member district of North Vancouver into three single-member districts. North Vancouver–Seymour would extend from Indian Arm in the east to Lonsdale Avenue in the west, North Vancouver–Capilano would extend from Lonsdale Avenue in the east to the Capilano River in the west, and West Vancouver–Howe Sound would extend from the Capilano River in the east to Bowen Island in the west and Pemberton in the north (see North Shore, Map 2).

The Legislative Assembly adopted the Angus Commission’s recommendations.



North Shore, Map 2



North Shore, Map 3

b. The Norris Commission (1975)

The Norris Commission recommended retaining the three districts, with some adjustments to bring about a more equitable distribution (see North Shore, Map 3).

The Legislative Assembly did not adopt the Norris Commission's recommendations.

c. The Eckardt Commission (1978)

Judge Eckardt recommended several boundary adjustments on the North Shore (see North Shore, Map 4), which the Legislative Assembly adopted.

d. The Warren Commission (1982)

None of Mr. Warren's recommendations affected these districts.

e. The McAdam Commission (1984)

None of the McAdam Commission's recommendations affected these districts.



North Shore, Map 4



North Shore, Map 5

f. The Fisher Commission (1988)

In his interim report Judge Fisher recommended that, because of an increase in population on the North Shore, an additional electoral district be created in North Vancouver (to be called Lonsdale), with boundaries that closely followed the municipal boundaries of the City of North Vancouver. It stretched from the Seymour River in the east, to the Capilano River in the west and to the Upper Levels Highway in the north. He also recommended that the eastern boundary of West Vancouver–Howe Sound be moved farther west, from the Capilano River to 22nd Street.

In his final report, Judge Fisher recommended that the four North Shore districts be called North Vancouver–Seymour, North Vancouver–Lonsdale, West Vancouver–Capilano and West Vancouver–Garibaldi. The Legislative Assembly adopted all of Judge Fisher’s recommendations. (see North Shore, Map 5).

g. The Wood Commission (1999)

The Wood Commission noted that the North Vancouver–Lonsdale boundaries did not follow those of the City of North Vancouver, resulting in portions of that city being apportioned to three different districts. However, no one suggested that this caused significant problems justifying a departure from using Highway 1 as the logical dividing line in this area.

Several submissions suggested that residents of smaller communities within West Vancouver–Garibaldi, such as Bowen Island and Squamish, did not truly have a community interest with the residents of West Vancouver, and that they would be better located in Powell River–Sunshine Coast. However, others pointed out that Vancouver is the accessible major centre for these communities and the place where many residents of Bowen Island, in particular, work. The commission decided against adding further communities to an already large district of widely dispersed and difficult-to-access communities, and recommended no changes to the four North Shore districts (see North Shore, Map 6).



North Shore, Map 6



North Shore, Map 7

In its final report (see North Shore, Map 7), the Wood Commission made only one boundary change to the south-eastern boundary of West Vancouver-Garibaldi, to ensure that the small native communities between Harrison Lake and Lillooet Lake would be included in the district, in light of their ties with the Pemberton and Mount Currie areas.

The Legislative Assembly adopted all of the Wood Commission's recommendations.

2. Our analysis of the North Shore electoral districts

The area we describe as the North Shore region currently has four electoral districts (see map, page 282.) These electoral districts, with their deviations at the time of the 1996 census, and now, are as follows (see Table 27):

TABLE 27: CURRENT SMP ELECTORAL DISTRICTS IN THE NORTH SHORE

Electoral District	1996 deviation*	2006 deviation**
North Vancouver–Seymour	+12.8%	+7.2%
North Vancouver–Lonsdale	-2.9%	-2.4%
West Vancouver–Capilano	+2%	-8.8%
West Vancouver–Garibaldi	+1%	+7.6%

* based on 1996 census data, and assuming 79 electoral districts

** based on 2006 census data, and assuming 79 electoral districts

With a total population of 210,163, this area of the province is entitled to its current four electoral districts. Balancing the population among all four electoral districts would result in an average deviation of plus 0.9 percent (based on 79 electoral districts).

It was suggested to us that all of the

City of North Vancouver should be included in the Vancouver-Lonsdale electoral district – it is currently spread among three electoral districts. We agree with that suggestion, because it is consistent with our desire to respect municipal boundaries whenever possible.

We also gave consideration to the Squamish First Nation’s three North Shore reserves, at Seymour River, Mosquito Creek and Capilano River. Currently, the North Vancouver–Lonsdale boundary (following the Upper Levels Highway) divides the Seymour River reserve in half, and the three reserves are spread among three electoral districts. In our view, it would be preferable for all three of these reserves to be included in one electoral district. To that end, we are proposing that the boundaries of North Vancouver–Lonsdale be extended farther east to include all of the Squamish First Nation’s Seymour Reserve, and further west to include all of the same Nation’s Capilano Reserve (currently shared with West Vancouver–Capilano) (see map of proposed North Vancouver–Lonsdale electoral district, page 284).

Expanding North Vancouver–

Lonsdale in this manner means that it will include some residents of the District of North Vancouver:

- people living west of the City of North Vancouver, and south of Marine Drive; and,
- people living east of the City of North Vancouver, and west of the Upper Levels Highway.

We are also proposing that the eastern boundary be extended eastward of the Upper Levels Highway in an area bounded by Lynn Valley Road, Kirkstone Road and Mountain Highway, so that residents of the City of North Vancouver living east of the highway do not need to drive through another electoral district in order to vote.

Having made those changes, we made several other boundary changes in order to balance the population among the other three North Shore electoral districts (see maps of three other proposed North Shore electoral districts, pages 285 to 287). We kept the population of West Vancouver–Garibaldi somewhat lower, in recognition of the higher-than-average growth that is expected along the Sea to Sky corridor over the next few years. Finally, we propose that this electoral district be renamed West Vancouver–Sea to Sky.

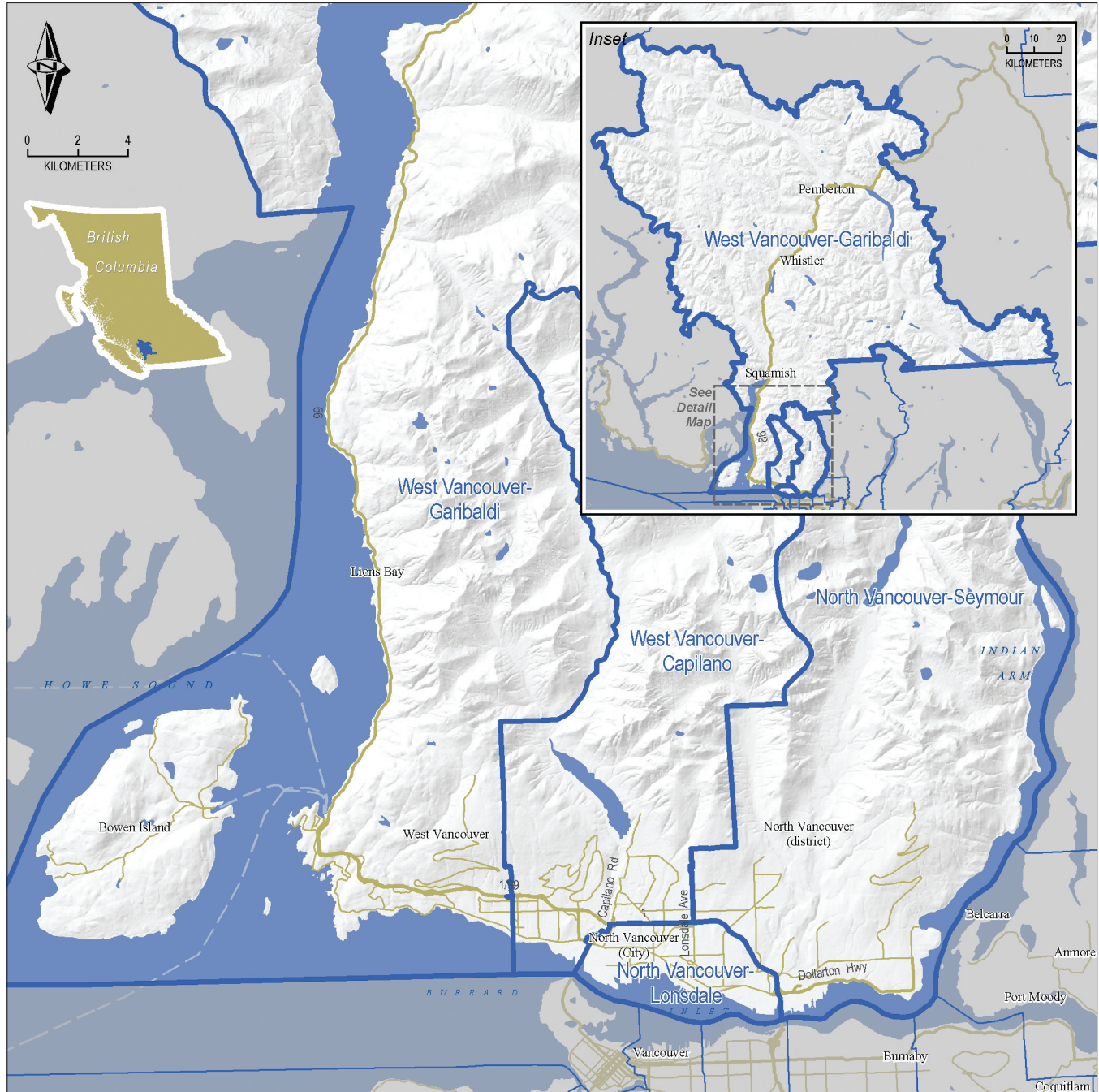
3. Conclusion

Accordingly, we propose that there be four electoral districts in the North Shore, as follows:

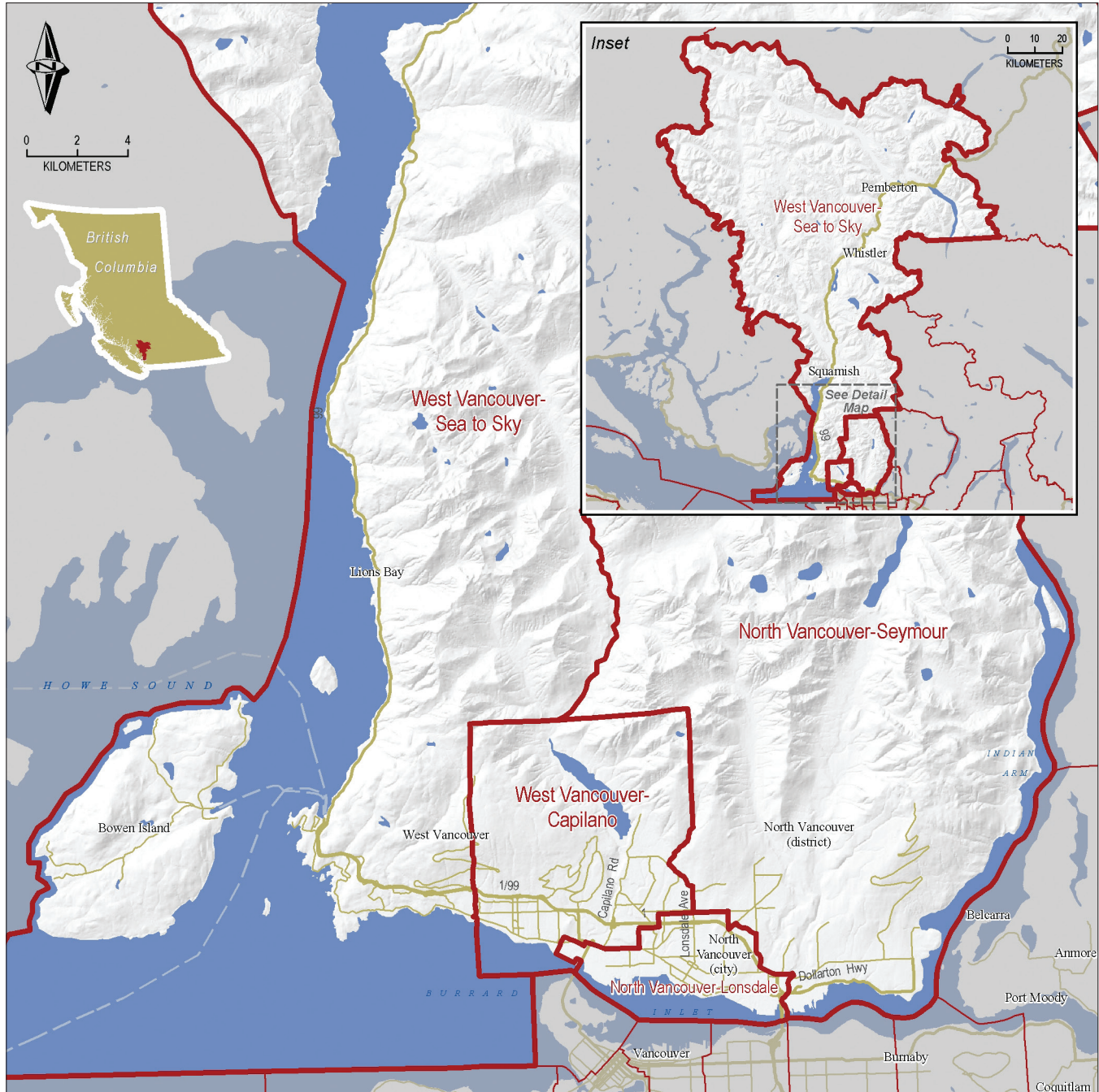
TABLE 28: PROPOSED SMP ELECTORAL DISTRICTS IN THE NORTH SHORE

Electoral District	Sq. Km.	Population	Deviation*
North Vancouver–Seymour	395	52,164	+2.7%
North Vancouver–Lonsdale	27	54,600	+7.5%
West Vancouver–Capilano	80	54,238	+6.8%
West Vancouver–Sea to Sky	9,613	49,161	-3.2%

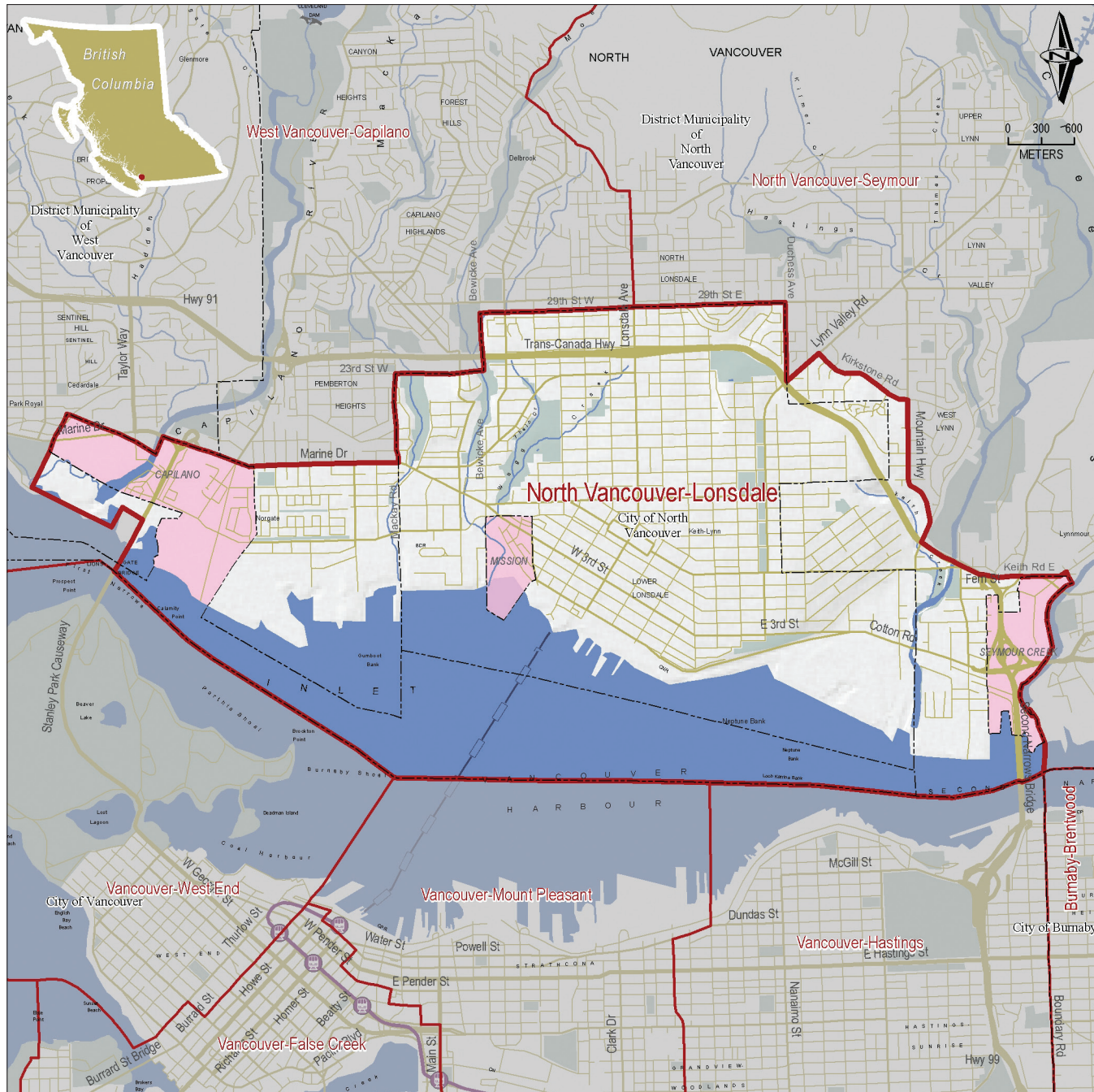
* based on 81 electoral districts, with a provincial electoral quotient of 50,784

Region: North Shore – Current Electoral Districts

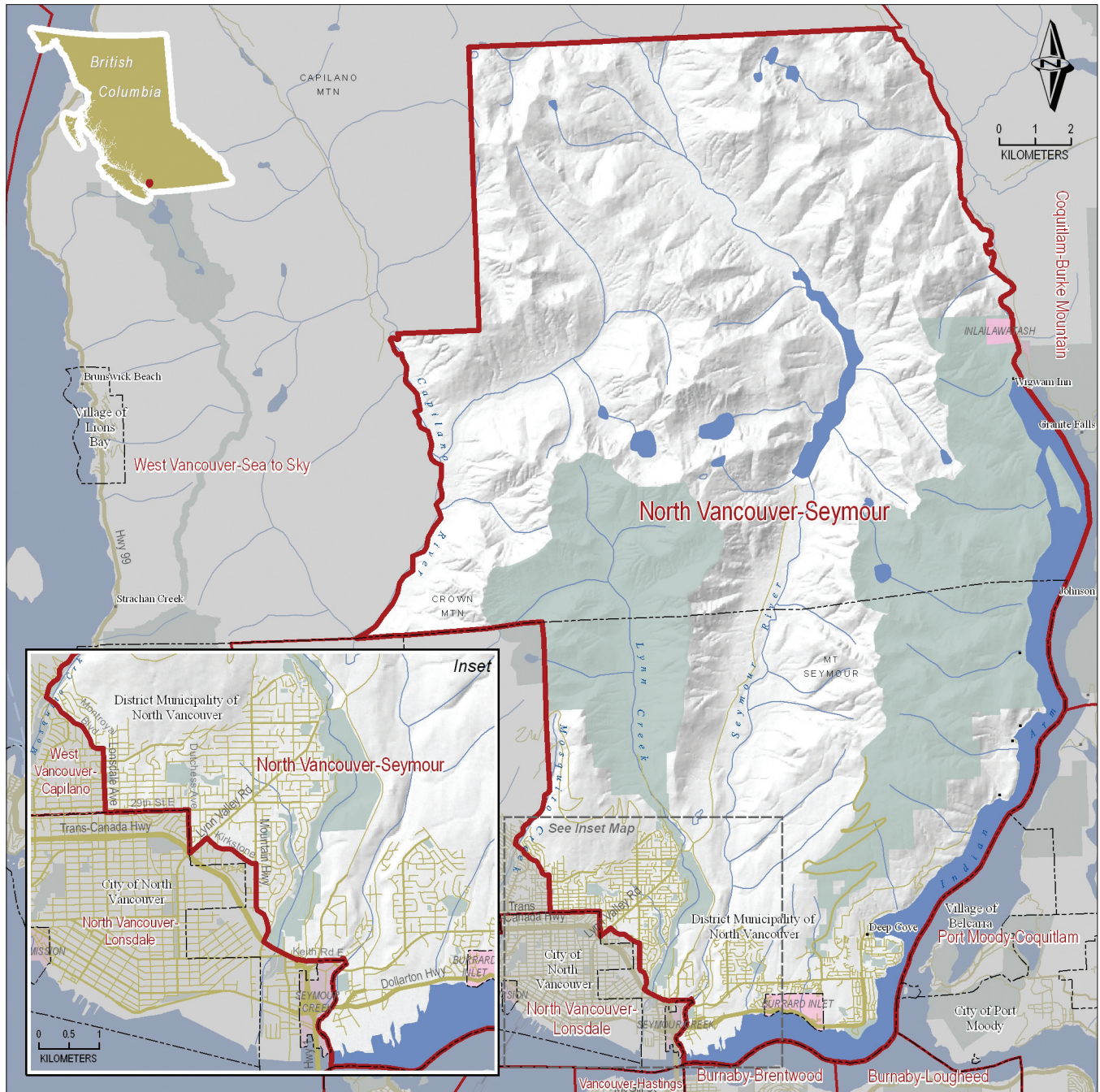
Region: North Shore – Proposed Electoral Districts



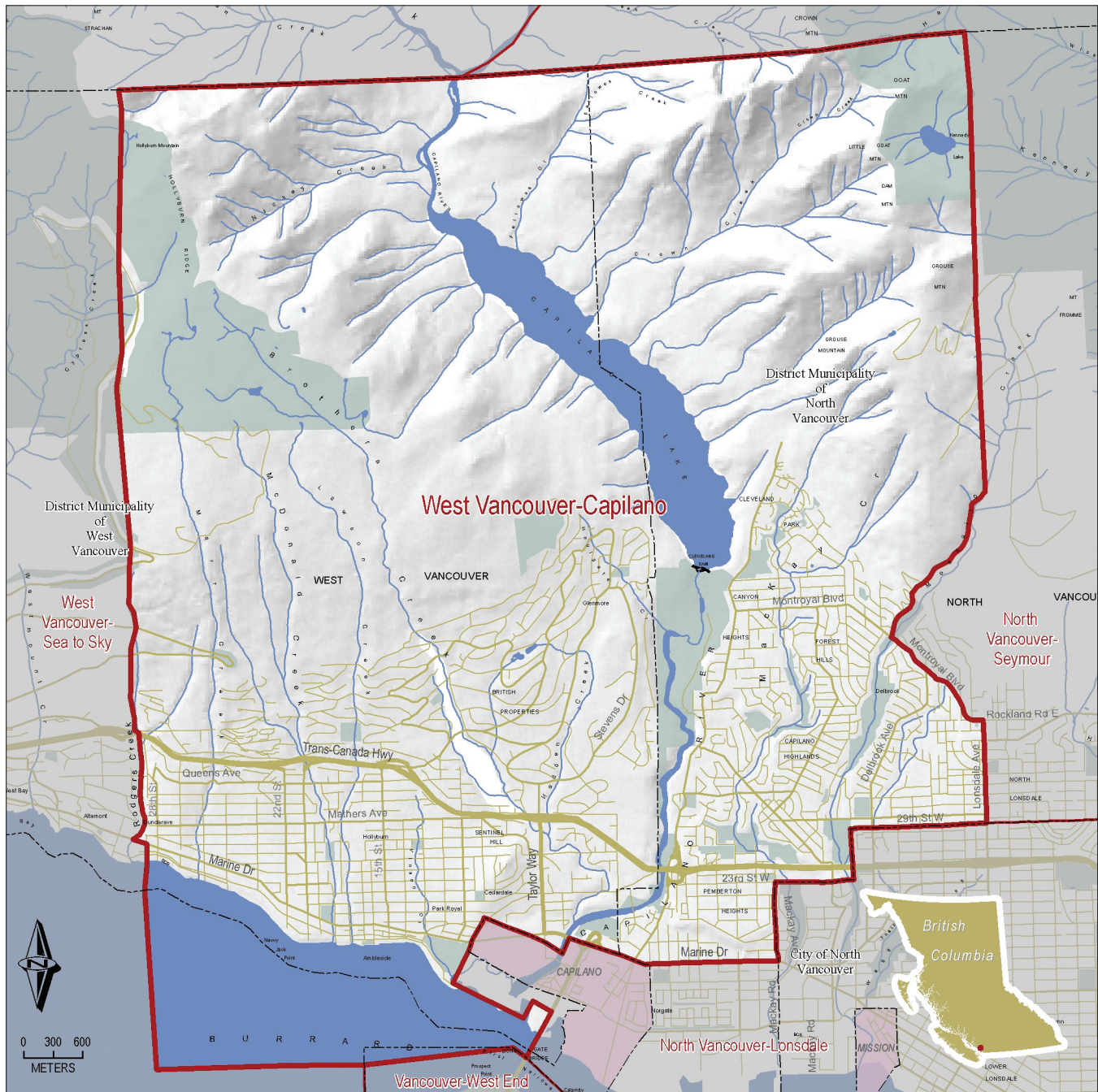
Region: North Shore – Proposed North Vancouver-Lonsdale Electoral District



Region: North Shore – Proposed North Vancouver–Seymour Electoral District



Region: North Shore – Proposed West Vancouver–Capilano Electoral District



Region: North Shore – Proposed West Vancouver–Sea to Sky Electoral District

